



Figure 1 – Map of the Balkan Peninsula with the location of Bulgaria and Pavlikeni

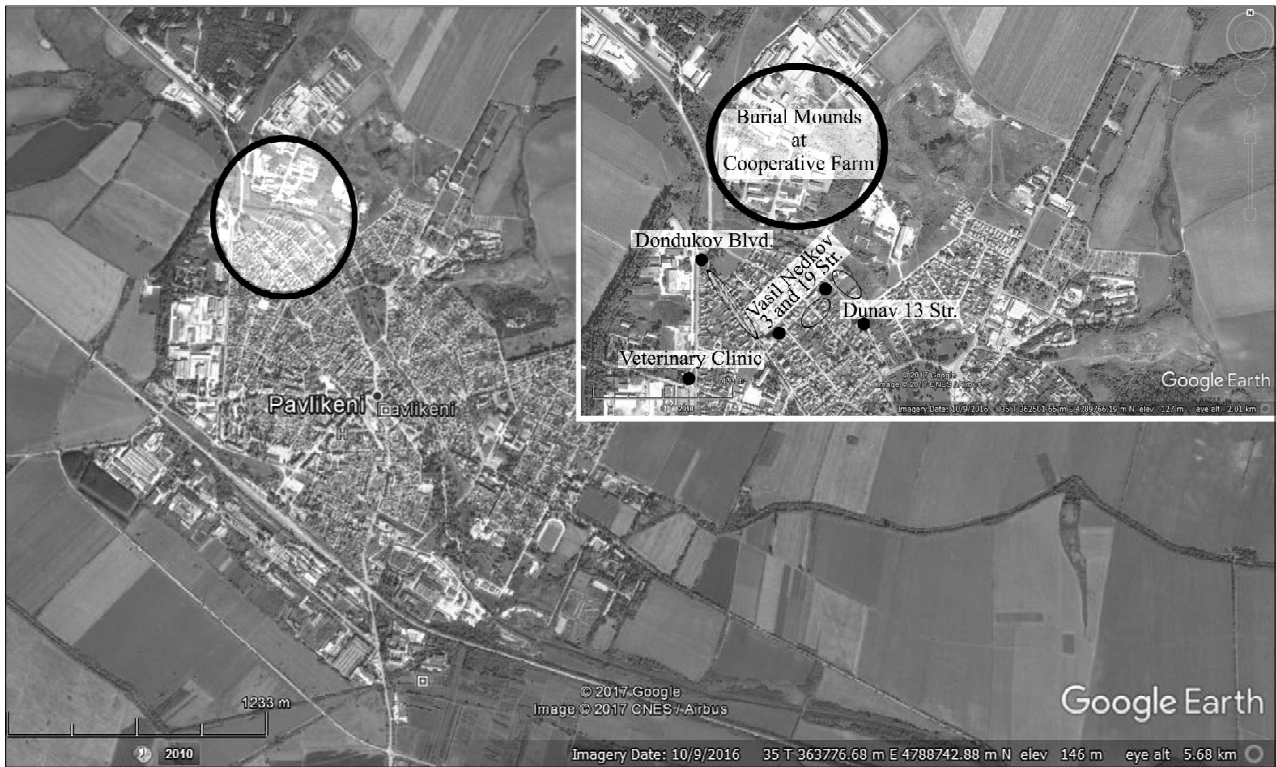


Figure 2 – Satellite image of the northwestern part of the town of Pavlikeni with marked places of the archaeological areas of the Roman settlement (Overlay: Google Earth, 10.09.2016)

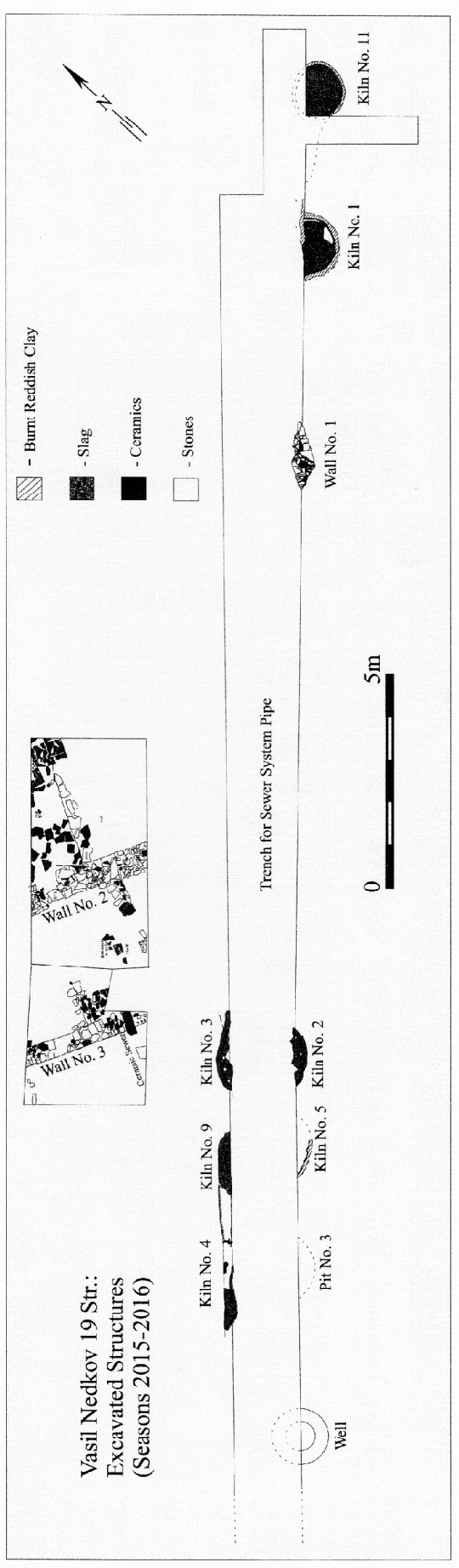


Figure 3 – Structures excavated at 19 Vasil Nedkov St. in 2015 (Drawings: P. Doychev and K. Chakarov)



Figure 4 – Kiln No. 1 – initial phase of excavation (K. Chakarov)



Figure 5 – Kiln No. 1 – final phase of excavation (K. Chakarov)

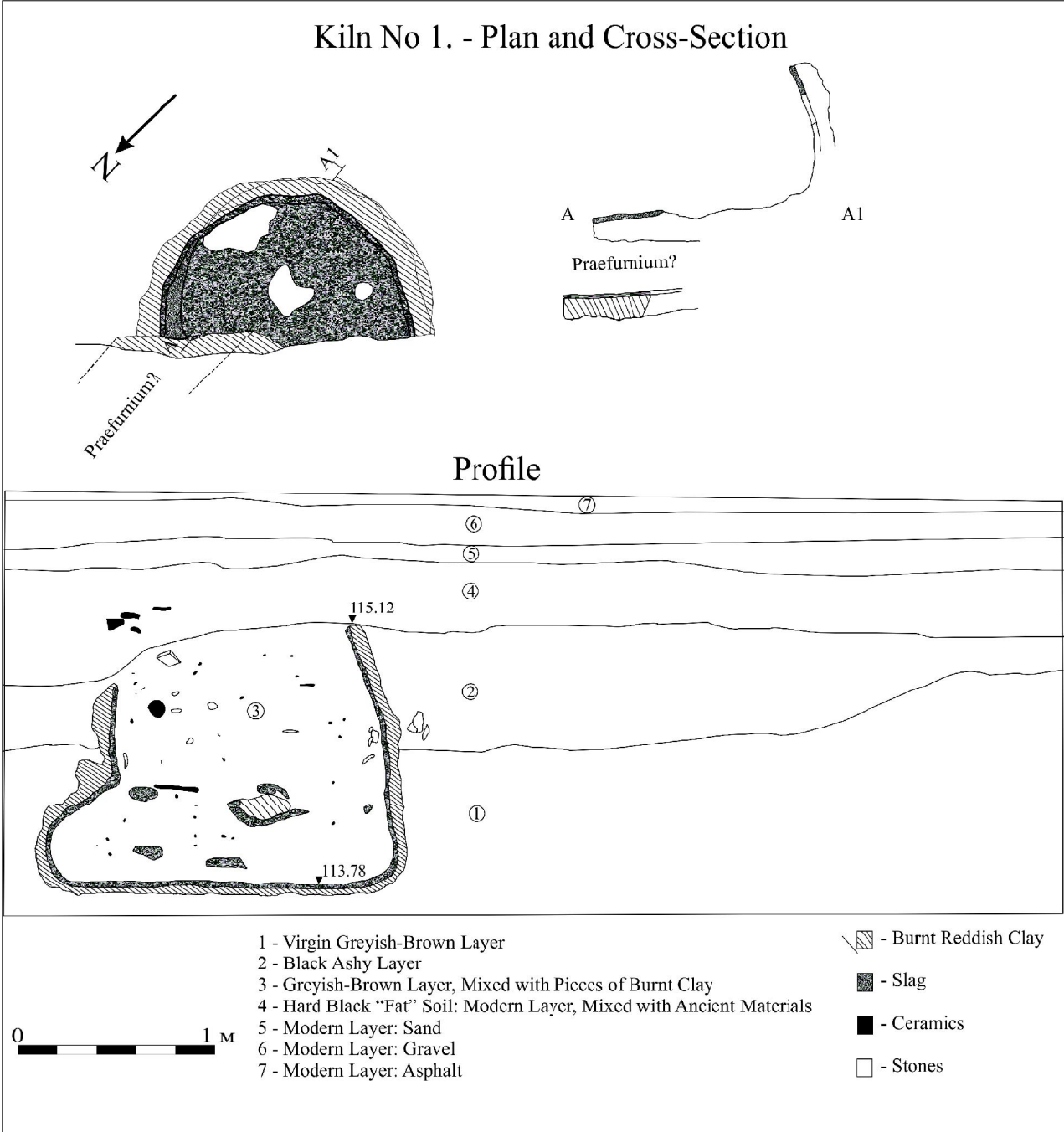


Figure 6 – Kiln No. 1 – plan, cross-section and profile (P. Doychev, K. Chakarov)



Figure 7 – Kiln No. 11 – initial phase of excavation (K. Chakarov)



Figure 8 – Kiln No. 11 – final phase of excavation (K. Chakarov)

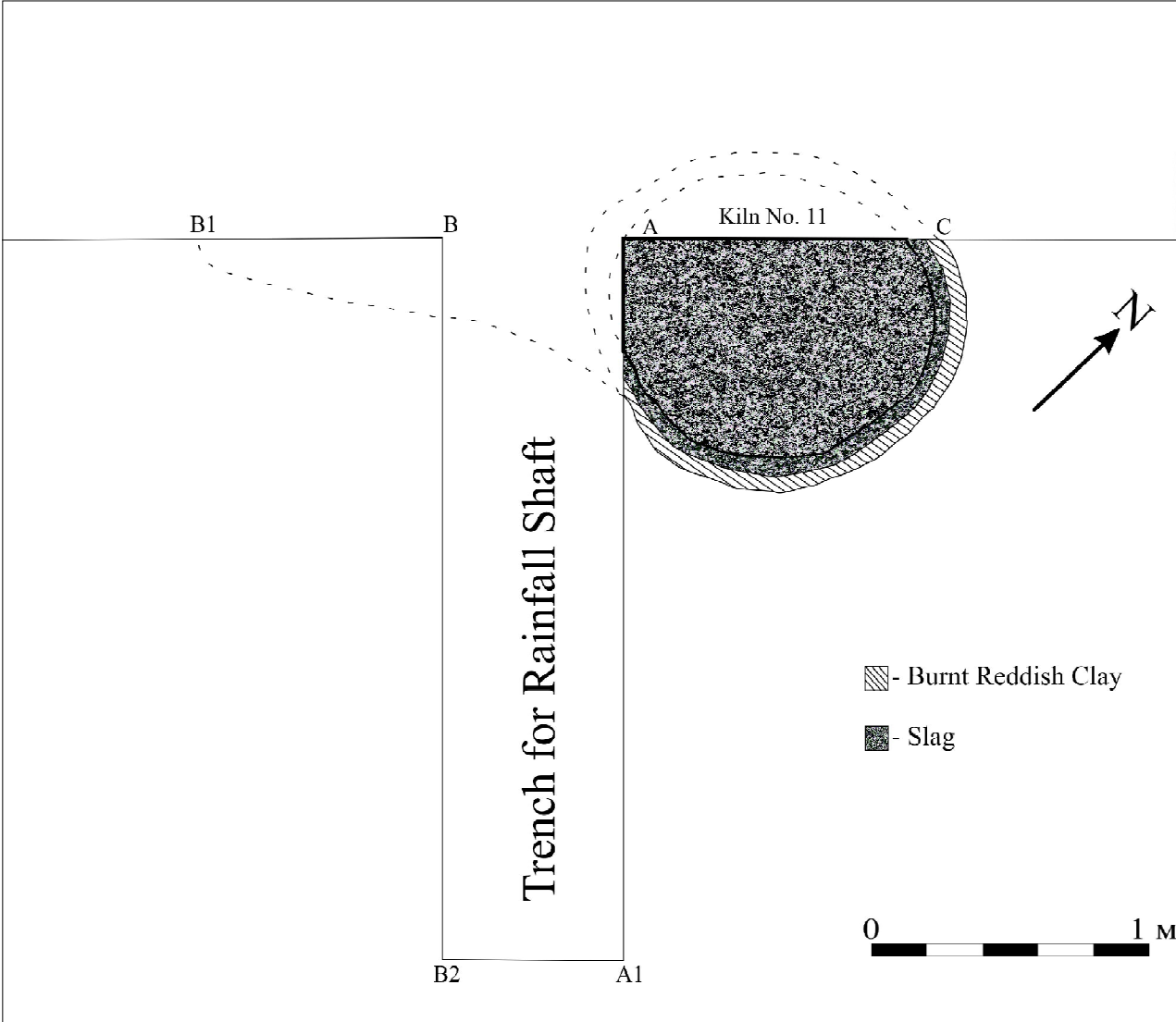


Figure 9 – Kiln No. 11 – plan (K. Chakaroy)

Kiln No. 11 - Profiles and Cross-Section

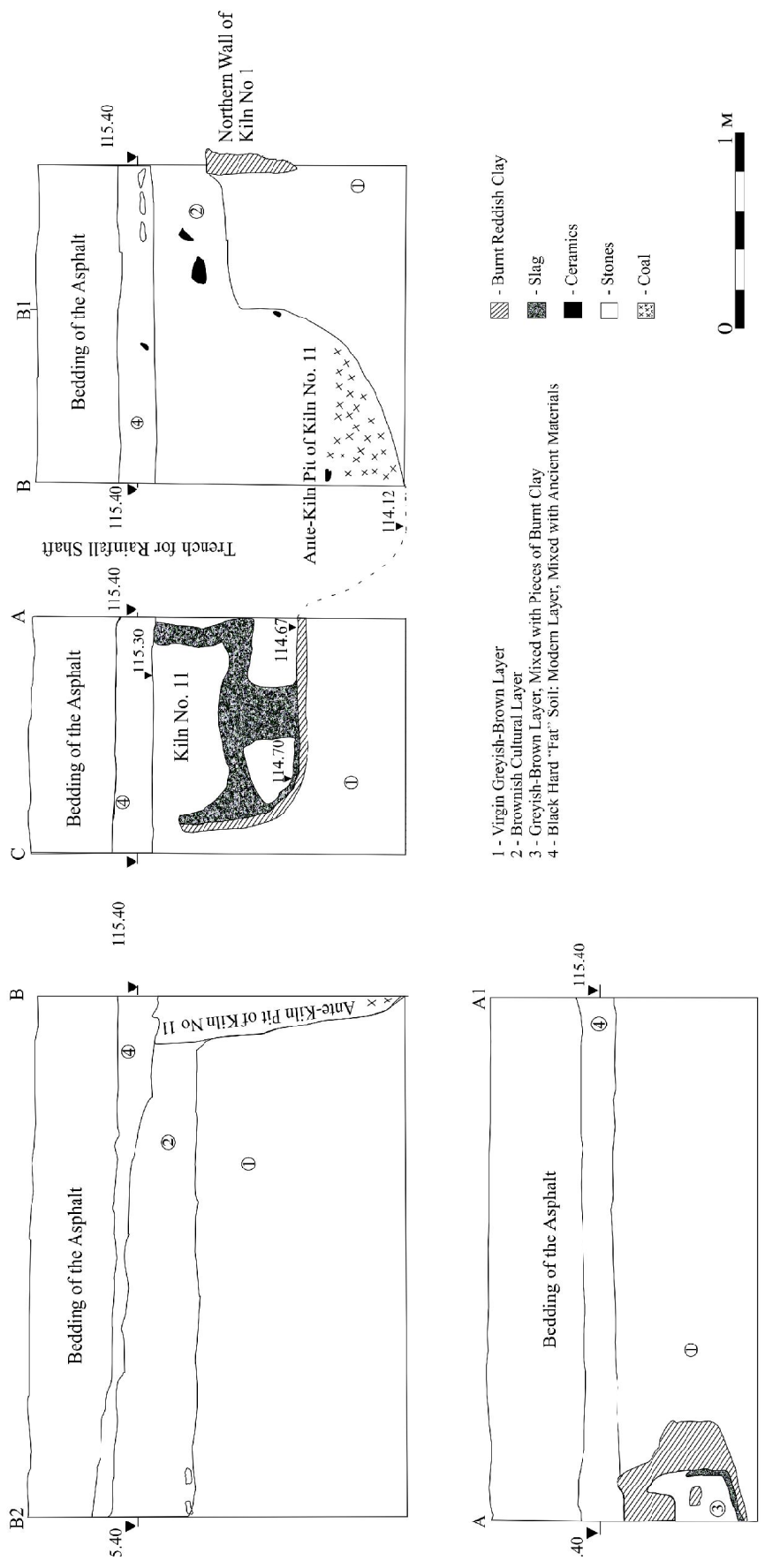


Figure 10 – Kiln No. 11 – profiles and cross-section (K. Chakarov)



Figure 11 – Kiln No. 2 – initial phase of excavation (K. Chakarov)



Figure 12 – Kiln No. 2 – final phase of excavation (K. Chakarov)